

# Opportunity Mapping

## Equity, Opportunity, and Sustainability in the Central Puget Sound: A Study of the Region's Geography of Opportunity

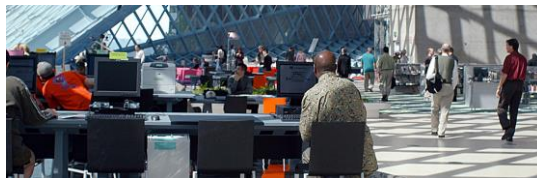
Fostering Social Equity Through Urban Planning

March 24, 2016

Rainier Beach High School

# Opportunity Defined

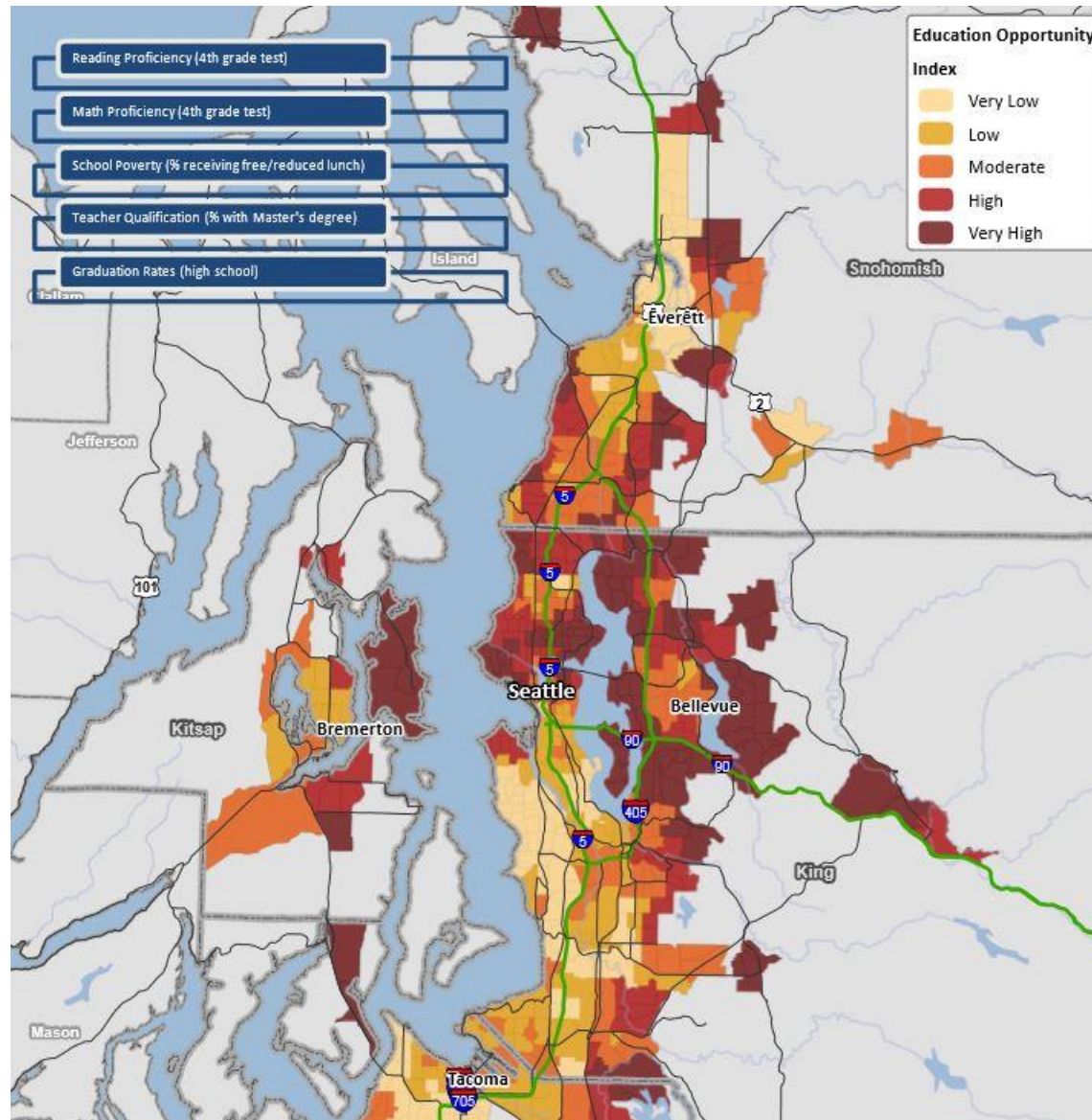
- “Opportunity” is a situation or condition that places individuals in a position to be more likely to succeed or excel
- Opportunity structures are critical to helping all people lead successful lives:
  - ✓ High-quality education
  - ✓ Healthy and safe environments
  - ✓ Good services and reliable systems
  - ✓ Stable high-quality housing
  - ✓ Access to employment
  - ✓ Political empowerment and representation
  - ✓ Building wealth channels
  - ✓ Positive, strong social networks



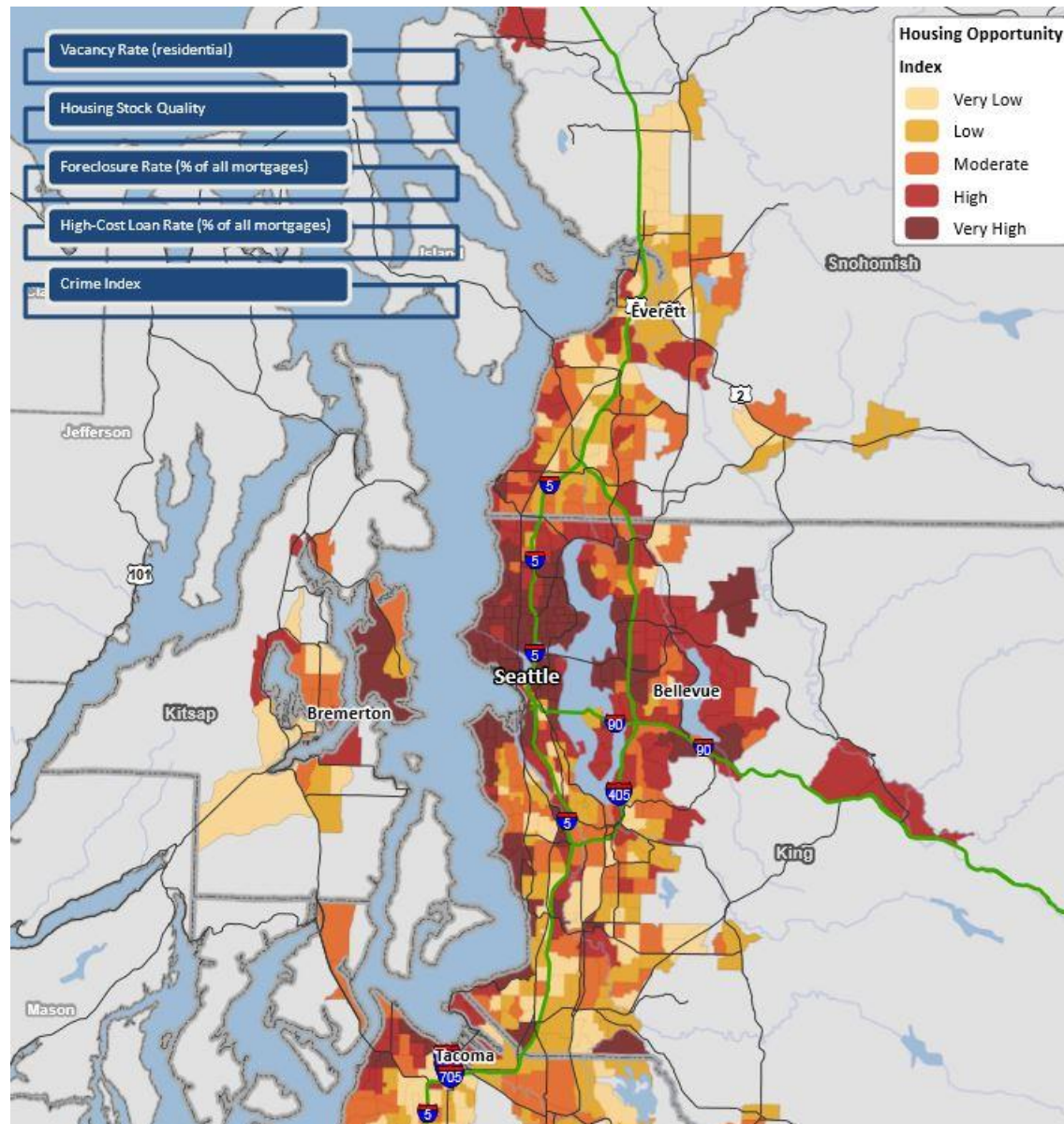
# Central Puget Sound Region's Indicators of Opportunity

Education	Economic Health	Housing & Neighborhood Quality	Mobility/ Transportation	Health & Environmental
Reading Test Scores (4 <sup>th</sup> Grade)	Access to Living Wage Jobs	Housing Vacancy Rates	Transportation Cost; Cost per commute	Distance to nearest park or open space
Math Test Scores (4 <sup>th</sup> Grade)	Job Growth Trends; % Change in Jobs from 2000-2010	Housing Stock Condition	Transit access; Proximity to Express Bus Stops	Toxic waste; Proximity to Toxic Waste Release
Student Poverty	Unemployment Rate	Foreclosure Rate	Average Transit Fare Cost	Access to healthy food; percent of tract in food desert
Teacher qualifications		High Cost Loan Rate	Walkability; % of commutes by walking	
Graduation Rate		Crime Index		

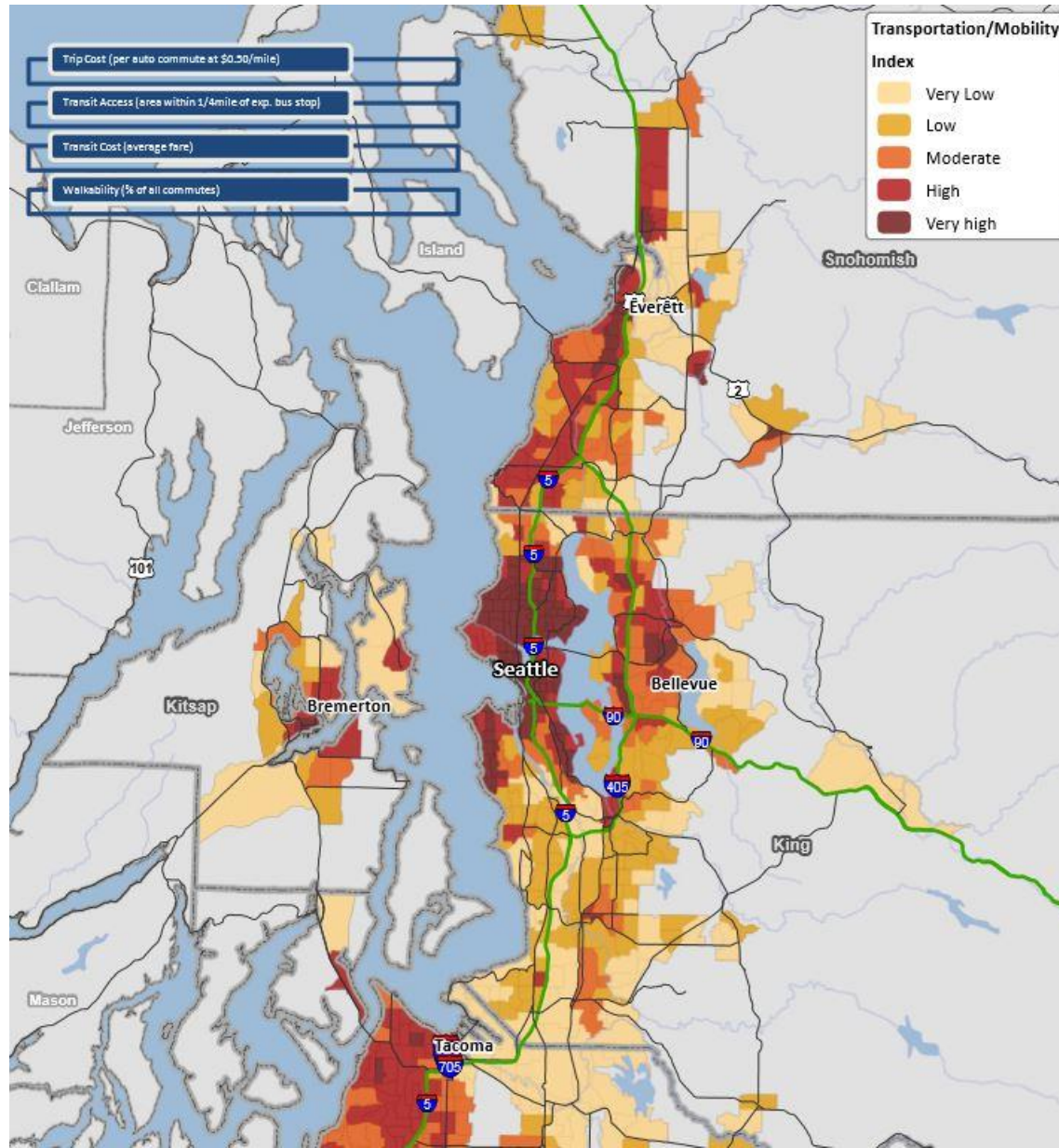
# Opportunity Index: Education



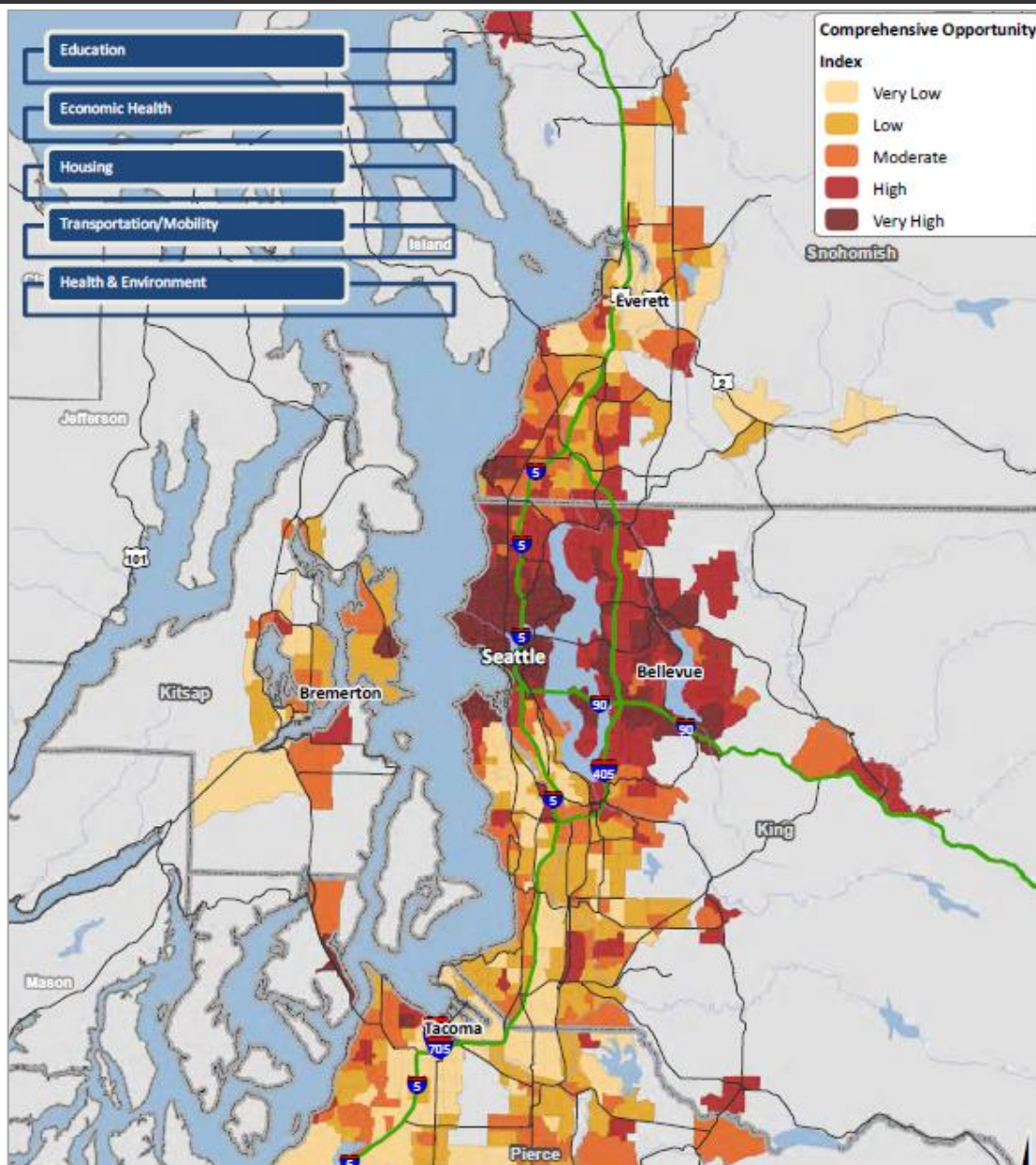
# Opportunity Index: Housing and Neighborhoods



# Opportunity Index: Mobility



# Mapping Opportunity: Composite Regional Index



## Regional inequities in access to opportunity:

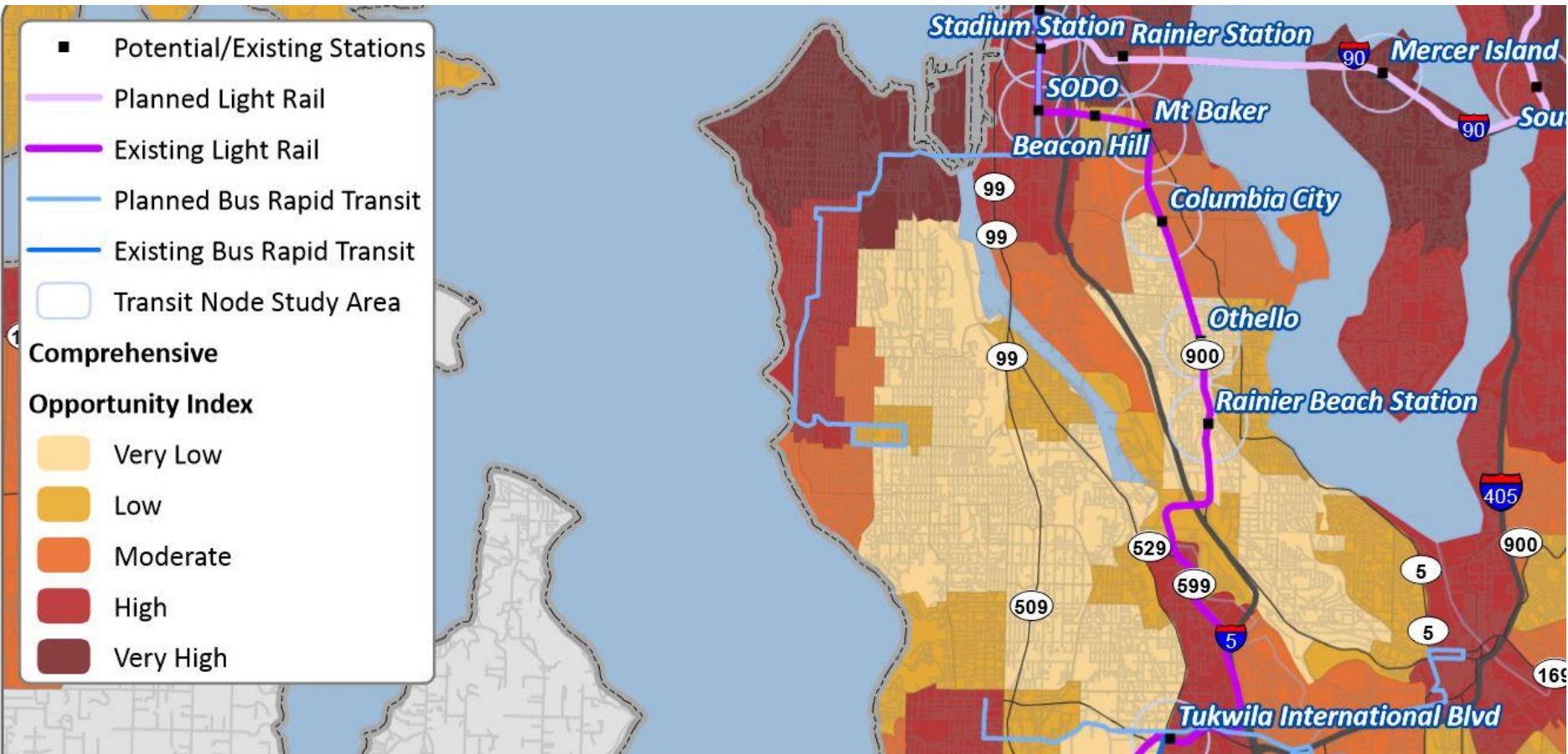
- Education
- Employment
- Mobility
- Health
- Neighborhood safety

Mapping helps tell the story

Many solutions needed to address inequities:

Neighborhood, city, region, state, nation...

# Mapping Opportunity: South Seattle





# Who has access to opportunity?

Figure 1. Opportunity Distribution By Demographic Group

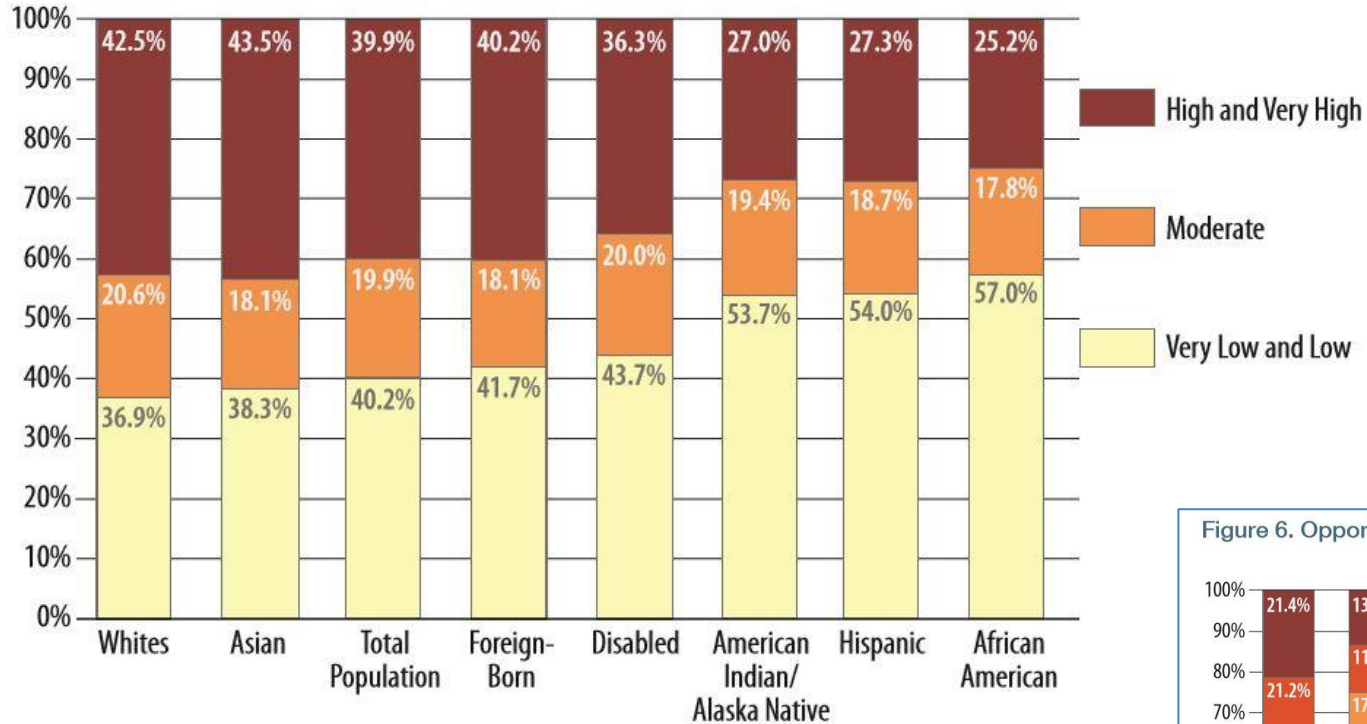
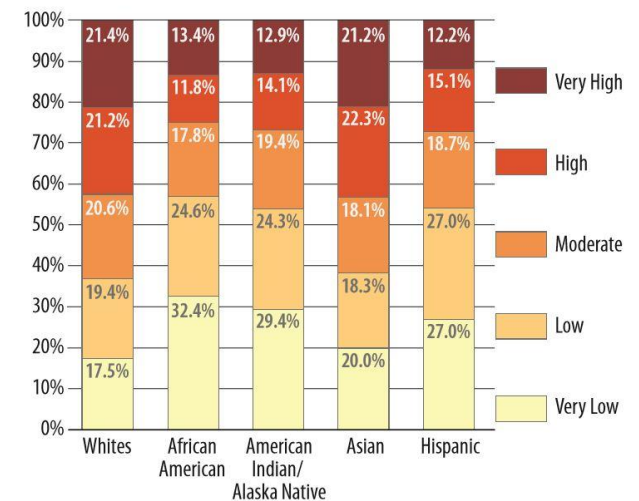


Figure 6. Opportunity By Poverty And Race



# Approaches to improving access to opportunity



- 1. Increase accessibility of low opportunity neighborhoods to higher opportunity neighborhoods.**

Example: *Transit investments and funding should seek to connect high and low opportunity neighborhoods. And where good paying jobs are.*



- 2. Direct affordable housing investments to higher opportunity areas.**

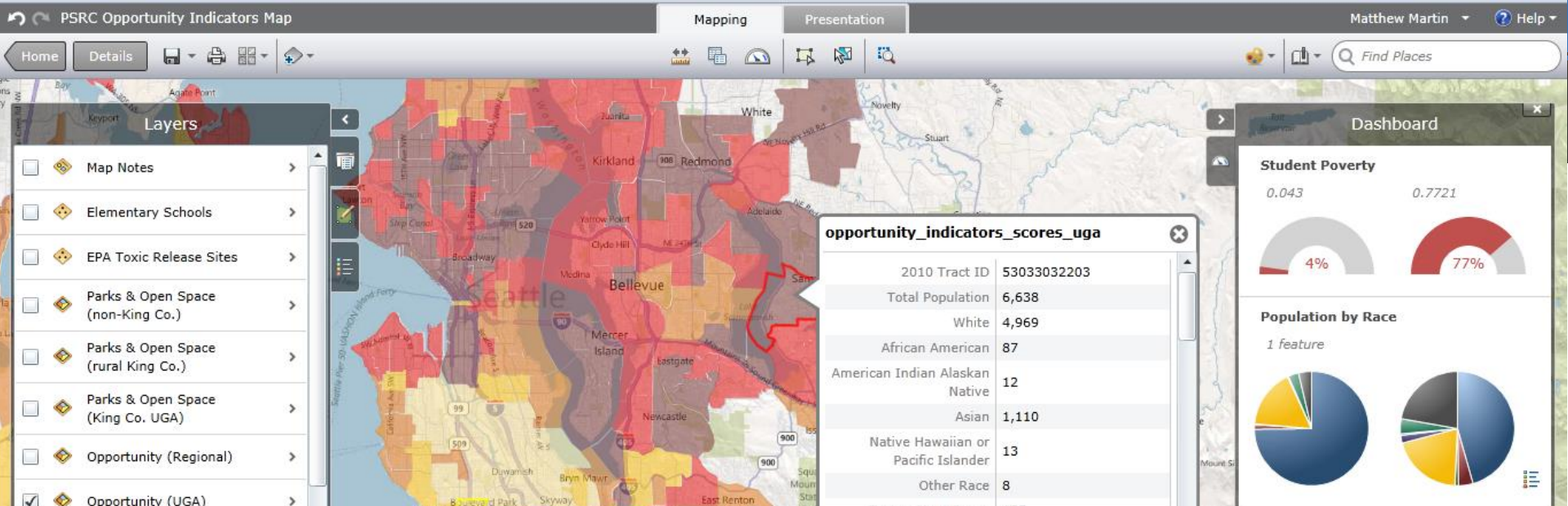
Example: *Have housing choices of all types throughout the region.*



- 3. Direct investments in education, health, and safety to lower opportunity neighborhoods.**

Example: *Focus regional public health effort on low opportunity neighborhoods.*

- 4. *Can you think of some?***



# For More Information

Maps online at:  
[psrc.org](http://psrc.org) → TOD → GTC Strategy → Equity

Michael Hubner, Principal Planner  
 Puget Sound Regional Council